

Playtop Walk

Part of the Playtop family of permeable paving solutions

Product description

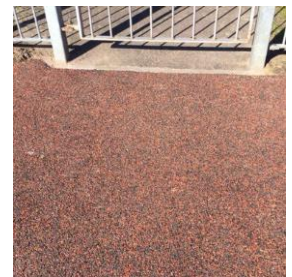
Playtop Walk is a water permeable surfacing system using a blend of naturally decorative aggregates and recycled granules from used tyres.

Fields of application

Playtop Walk is suitable for pedestrian, bicycle and equestrian traffic on pathways and rural trails. Playtop Walk meets the accessibility requirement for wheelchair users, prams and buggies.

Properties

The black rubber granules and decorative aggregates are bound together with a specially formulated moisture curing polyurethane binder, to produce a firm surface with good grip and resilience. When constructed on a suitable base the surface is fully porous and meets the requirements for SUD's (Sustainable Urban Drainage Systems)



Technical data

Specification	Sub-base	Thickness (mm)	Aggregate blend m ² (kgs)	Playtop 01 Binder per m ² (kgs)
	Concrete or tarmac	25	25	3.3
	Well compacted stone	35	35	4.6
Test Certificates	The surface has been independently tested for slip resistance and porosity. Test certificates and a copy of the full report can be requested from the Customer Services. The test certificates are only applicable where ALL the constituents are purchased directly from PLAYTOP and the surfacing has been mixed and installed according to our instructions. Contact the Technical Department for more information.			
Stability and ecology	Once installed and fully cured the surface is considered inert and non-toxic The surfacing uses large quantities of recycled tyres, one of the most intractable wastes known to man and therefore has excellent environmental credentials.			
Above figures are guide values and should not be used as a basis for specifications!				



Application Method - Bonded system

The materials must be bonded with a specially formulated Playtop polyurethane binder in accordance with the manufacturer's instructions.

The only approved binder for the system is Playtop 01. Binders from other suppliers or other standard Playtop binders **MUST NOT BE USED.**

The aggregate blend should be mixed with the binder at a ratio of minimum 3.3kgs per 25kg bag of aggregate; for very heavily used areas this can be increased to 3.5kgs. The materials must be accurately measured and thoroughly mixed in a force action pan mixer for a minimum of 3 minutes before application.

The materials should be applied to the substrate and levelled to the required thickness by rake, screeds or trowel and then smoothed and lightly compacted with a roller or

trowel. Playtop 25 environmentally friendly smoothing agent can be used to lubricate the tools and ensure a good finish.

Once installed the area needs to be protected until fully cured. Curing periods vary according to climatic conditions but typically can be between 6 and 24 hours.

Full strength of the surface will not be realised for 3 days after installation so for heavily used areas it is advisable to restrict the use during the first 3 days.

Avoid installation during periods of rain, in standing puddles of water or at temperatures below 10°C.

The Playtop 01 binder is based on Aromatic PU and may therefore be subject to some initial yellowing which could be visible on lighter coloured aggregates. The yellowing will clear after time due to abrasion and further UV exposure.

Standard Colours

Six standard colours are available from stock (special colours can be ordered subject to lead times and minimum quantities)

Benefits:-

- Simple to install.
- Does not necessarily require a newly engineered base.
- Low maintenance.
- Uses one of the most intractable wastes known to man
- Common uses:
 - Footpaths
 - Eco-trails
 - Cemetery paths
 - Cycle ways
 - Tree pits
 - Canal and river paths

Pack size

Standard 25kg PE bags usually ex-stock for standard colours

Storage

Keep aggregate dry and binder in frost free conditions.

Safety precautions

Playtop Walk is non-hazardous in its cured condition. For protective measures, transport regulations and waste management please refer to the Material Safety Data Sheet.



Red



Silver



Gold

